

# Brooklea Meadows

quality, style, exclusivity...



# quality, style, exclusivity

quality, style, exclusivity



assured...

Ashbury Homes is a niche developer committed to delivering quality and design excellence to the modern property market.

With a proven track record building high specification properties in and around Cheshire, we create exclusive homes tailored to satisfy your every desire.



# at Brooklea Meadows...

## at Brooklea Meadows

Welcome to Brooklea Meadows, the latest development by Ashbury Homes, an award winning developer who specialises in true luxury apartments and executive homes.

Brooklea Meadows is an exclusive development of luxury apartments, townhouses and period detached properties created in an elegant Victorian country estate off the Cheshire countryside.

Nestled within 20 acres of grounds, meadows and orchards this listed Victorian Manor House, Chapel and associated buildings have been sympathetically restored to provide a secluded, exclusive residential scheme.

From its conception Brooklea Meadows has been designed to provide elegant period living for Cheshire's discerning property market.

This truly is the perfect country retreat you can call home.

a development that exudes style...



# location, location, location

location, location, location

discover the beauty of Brooklea...

Brooklea Meadows is located in the historic area of Childer Thornton, Cheshire.

Through secure gates and down a spectacular private driveway, the scheme is located just off the Welsh Road, close to Ledsham Village.

With excellent commuter links to Chester, Liverpool and surrounding areas, Brooklea Meadow offers unique character properties in an unrivalled location.



# living without compromise...

living without compromise

## Security

- CCTV
- Spectacular Private Drive
- Internal Intercom System
- Private Secure Car Parking
- Remote Control Gated Access

## Technology

- Induction Hob
- Zoned Lighting
- Central Controlled Heating
- Integrated Surround Sound
- BT Points in all Key Spaces
- Digital / Satellite TV within all Habitable Rooms

## Kitchen

- Bespoke Designer Kitchen
- Granite Worktops
- Full Range of Quality Integrated Appliances

## Bathrooms / En-suites / WC

- Elegant State of the Art Sanitary Ware
- Sumptuously appointed Floor to Ceiling Italian Porcelain Tiles

## Bedrooms

- Luxury, Spacious Bedrooms
- En-suites within the Majority of the Properties

## Flooring

- A selection of High Quality Timber and Porcelain Tiles
- Luxury Carpets in all Bedrooms

## External

- Professional Size Tennis Court
- Private Residential Fitness Suite
- Private Balcony, Garden or Terrace with all Properties
- Extensive Fully Landscaped Grounds, Orchards and Allotments

At Brooklea Meadows the above specification comes as standard.

you deserve it...



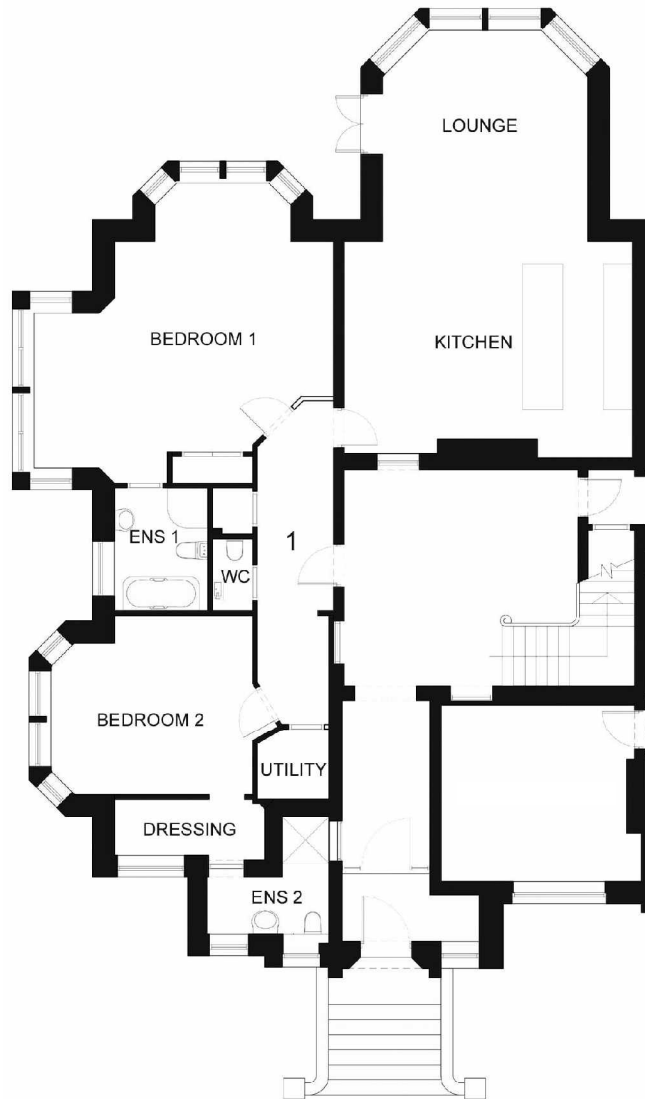
# quality, style, exclusivity

quality, style, exclusivity



# the Manor

the Manor



## Explore property 1...

Property 1 comprises of 1533 sq ft and embraces:

- lounge
- kitchen / diner
- wc
- utility
- master bedroom one
- bedroom two
- en-suite one
- en-suite two
- private terrace
- private secure car parking

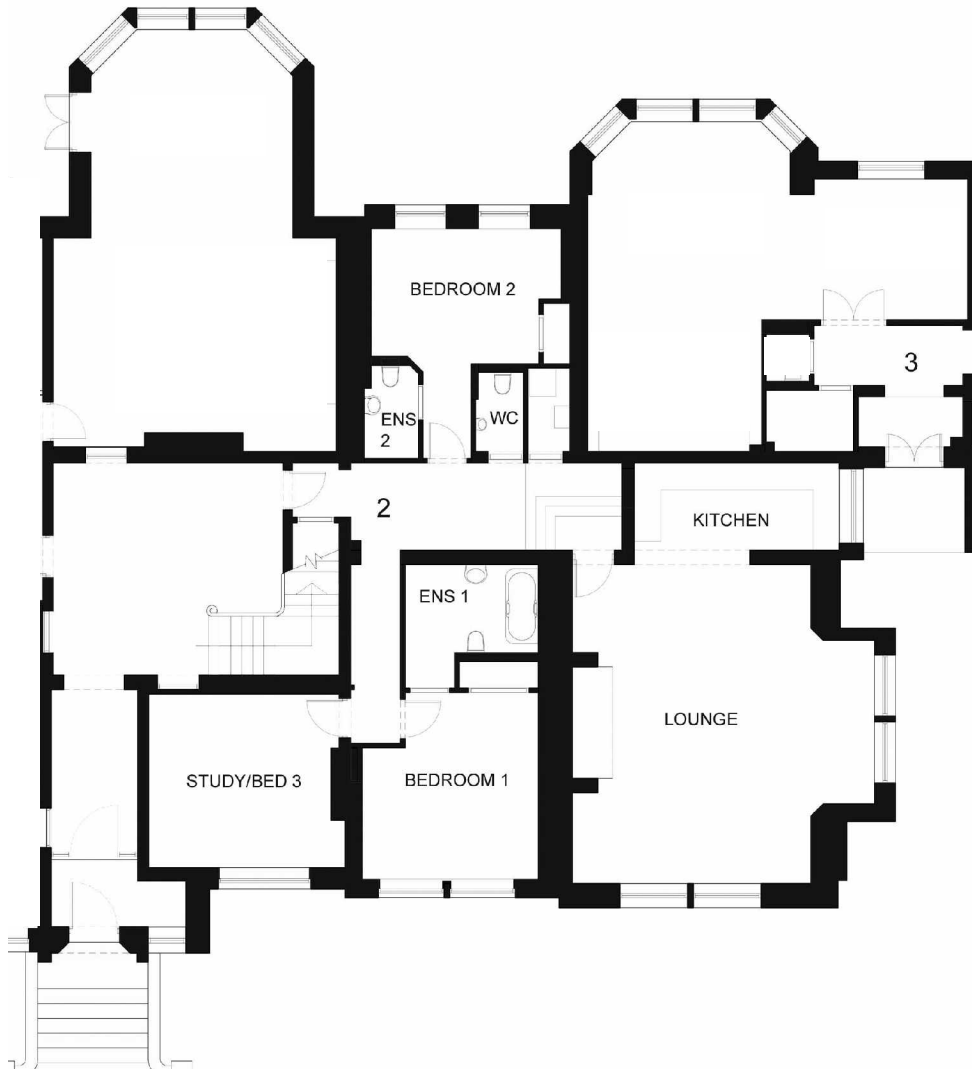
£ 1,495

## manor Apartment

2 bedrooms & terrace

# the Manor

the Manor



## Explore property 2...

Property 2 comprises of 1304 sq ft and embraces:

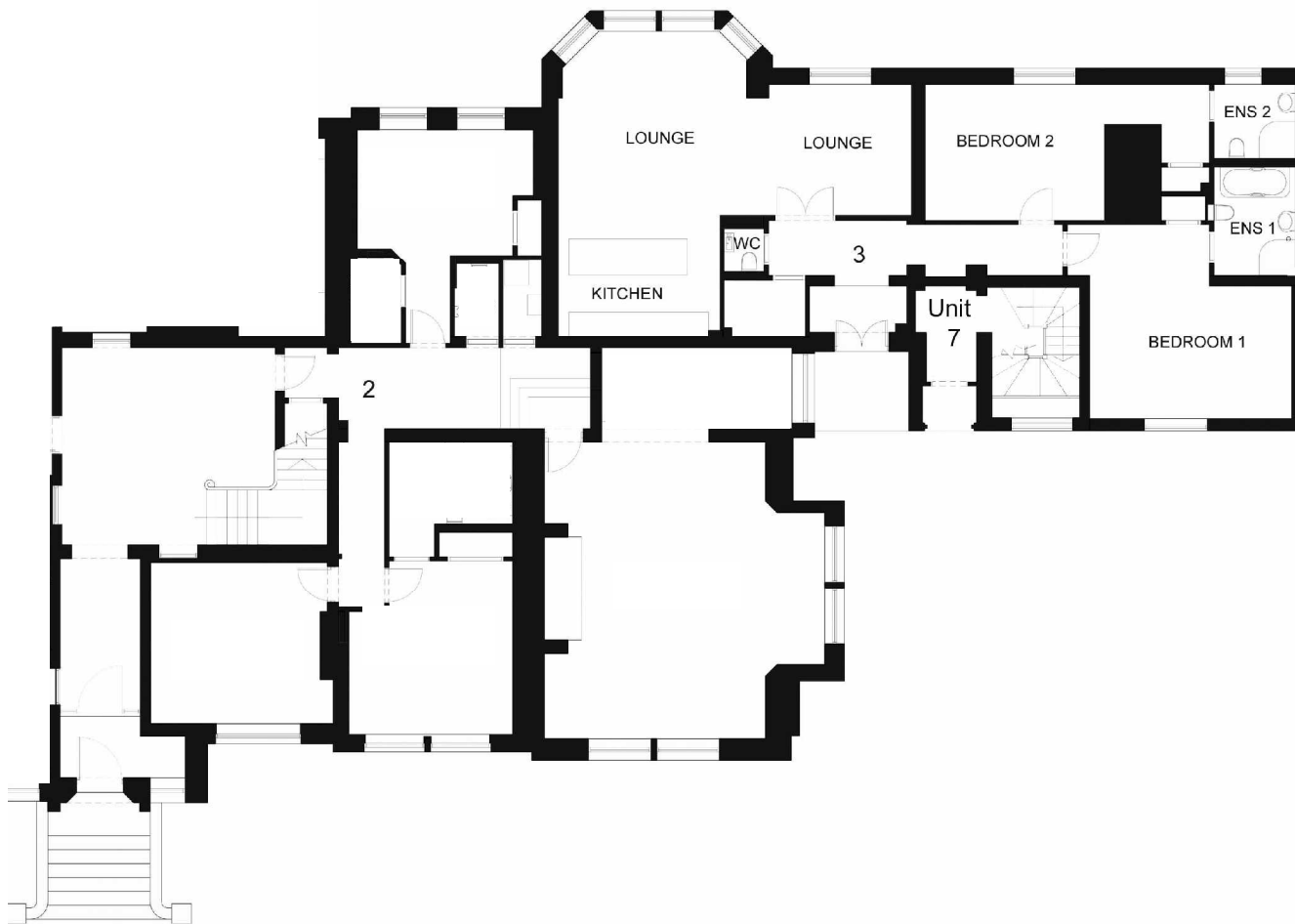
- lounge
- kitchen / diner
- wc
- utility
- master bedroom one
- bedroom two
- en-suite one
- en-suite two
- study / bedroom three
- private secure car parking

£ 1,250

## manor Apartment

2 bedrooms & 2 en-suites





## Explore property 3...

Property 3 comprises of 1388 sq ft and embraces:

- lounge
- kitchen / diner
- wc
- utility
- master bedroom one
- bedroom two
- en-suite one
- en-suite two
- private secure car parking

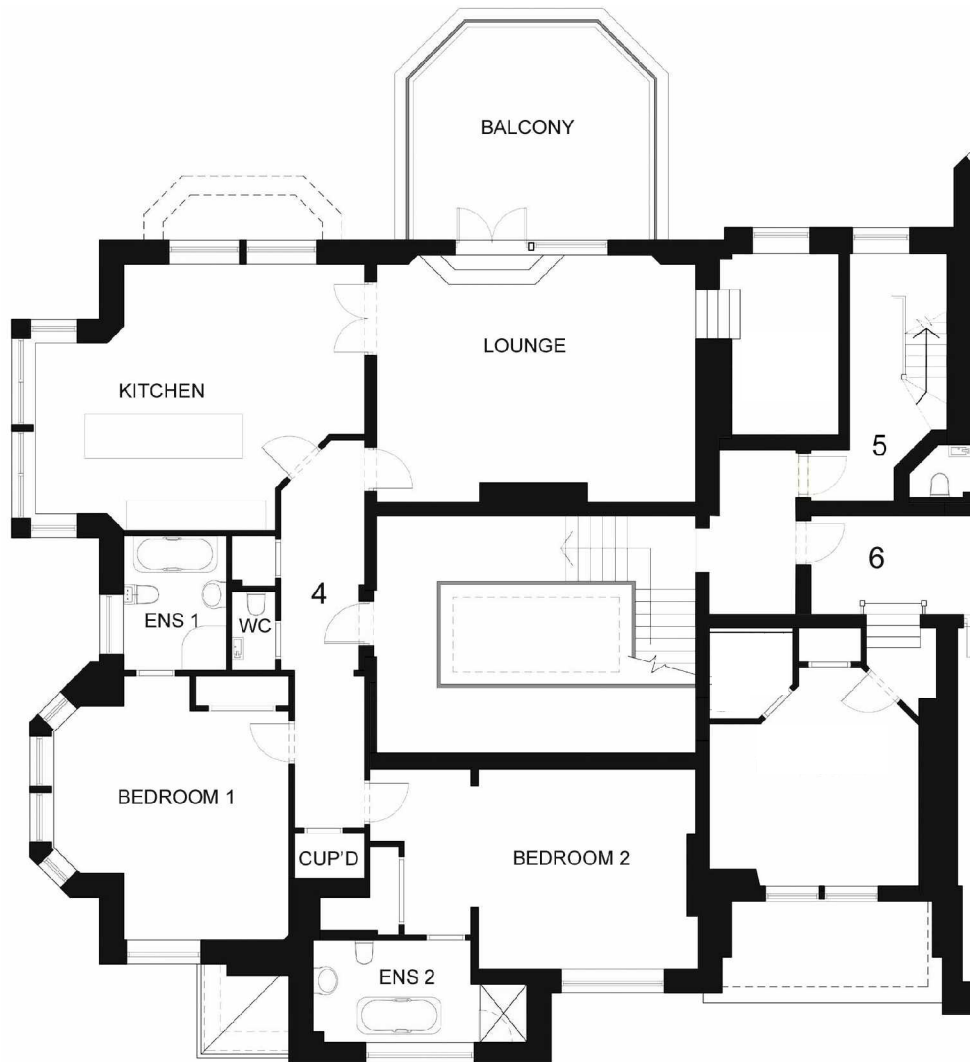
£ 1,650

## manor Apartment

2 bedrooms & 2 en-suites

# the Manor

the Manor



## Explore property 4...

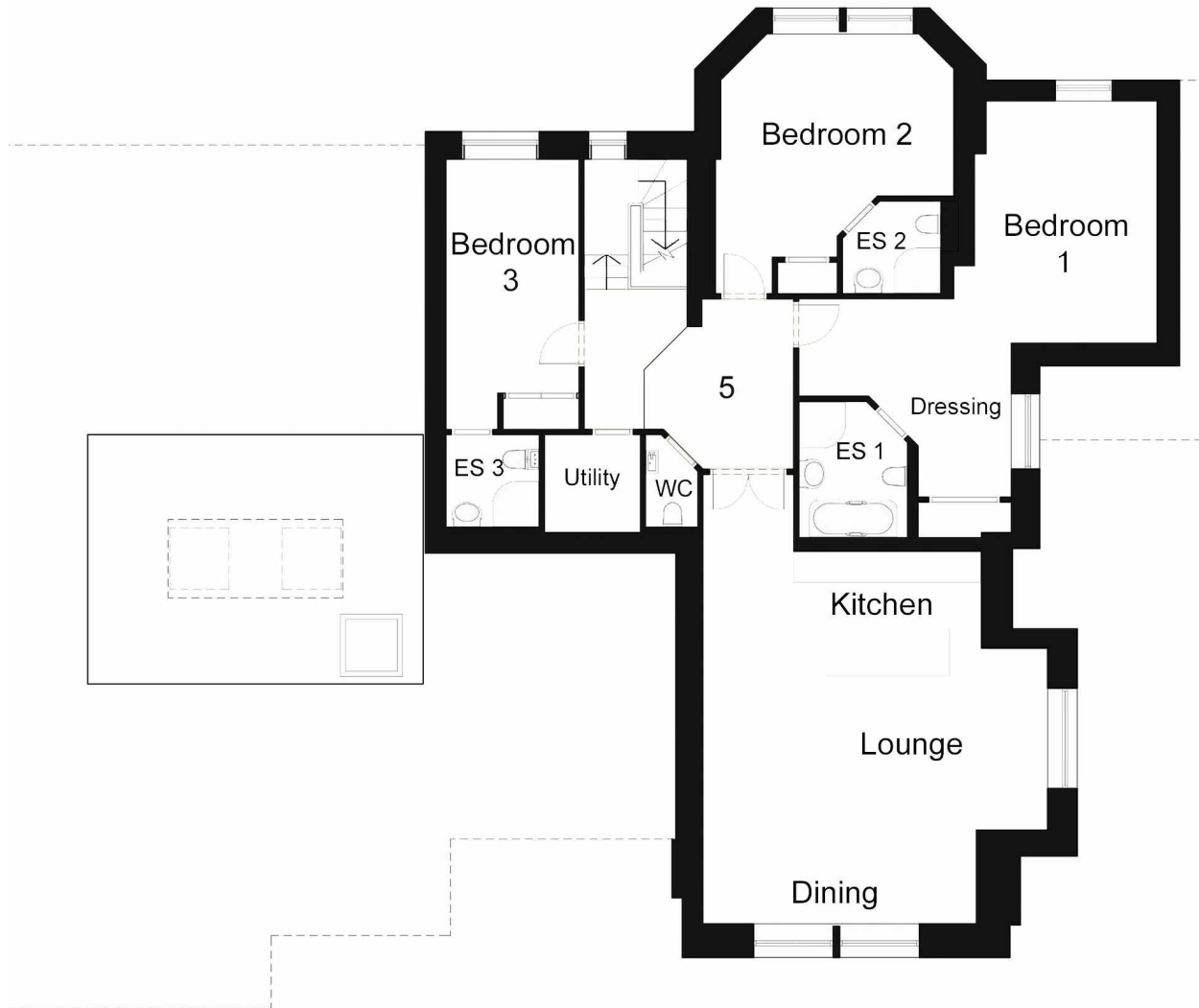
Property 4 comprises of 1827 sq ft and embraces:

- lounge
- kitchen / diner
- wc
- utility
- study
- master bedroom one
- bedroom two
- en-suite one
- en-suite two
- private balcony
- private secure car parking

£ 1,295

## manor Apartment

2 bedrooms & balcony



## Explore property 5...

Property 5 comprises of 1786 sq ft and embraces:

- lounge
- kitchen / diner
- wc
- utility
- master bedroom one
- bedroom two
- bedroom three
- en-suite one
- en-suite two
- en-suite three
- private secure car parking

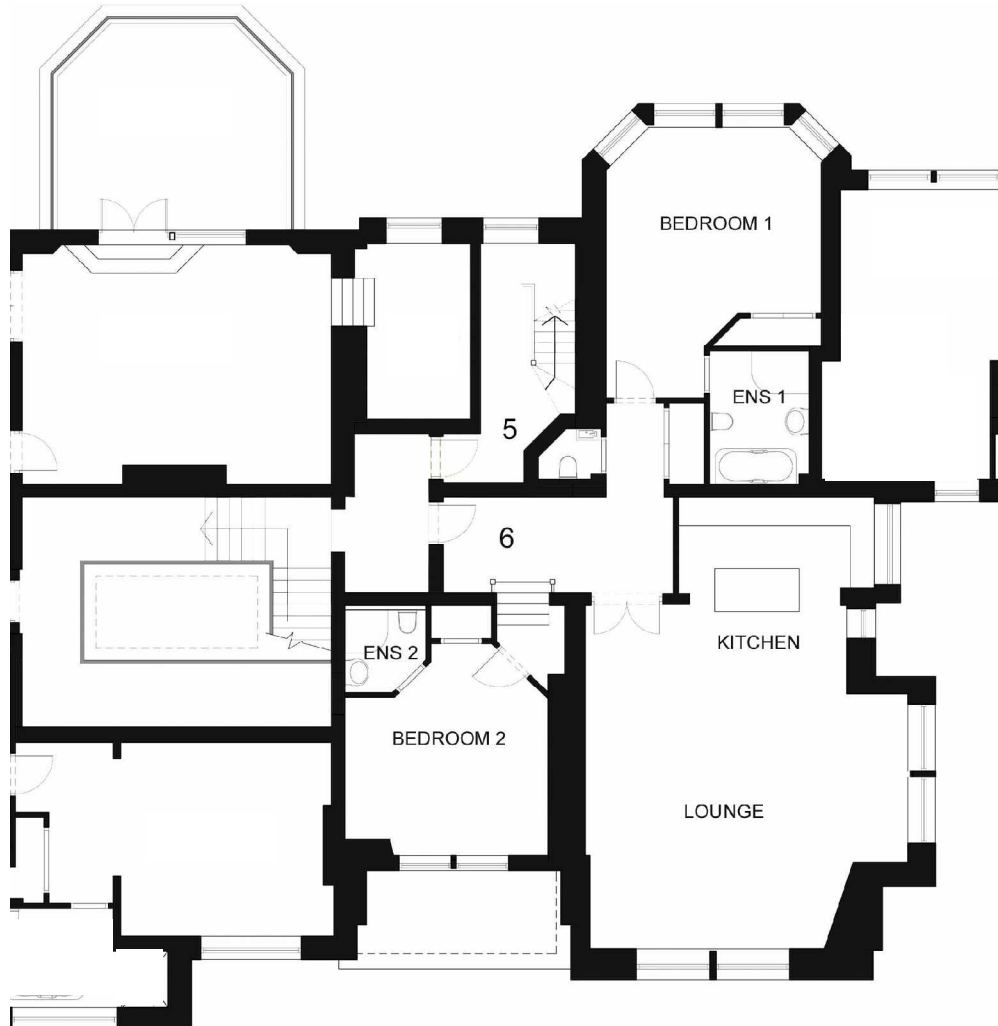
£ 1, 250

## manor Apartment

3 bedrooms & 3 en-suites

# the Manor

the Manor



## Explore property 6...

Property 6 comprises of 1388 sq ft and embraces:

- lounge
- kitchen / diner
- wc
- master bedroom one
- bedroom two
- en-suite one
- en-suite two
- private secure car parking

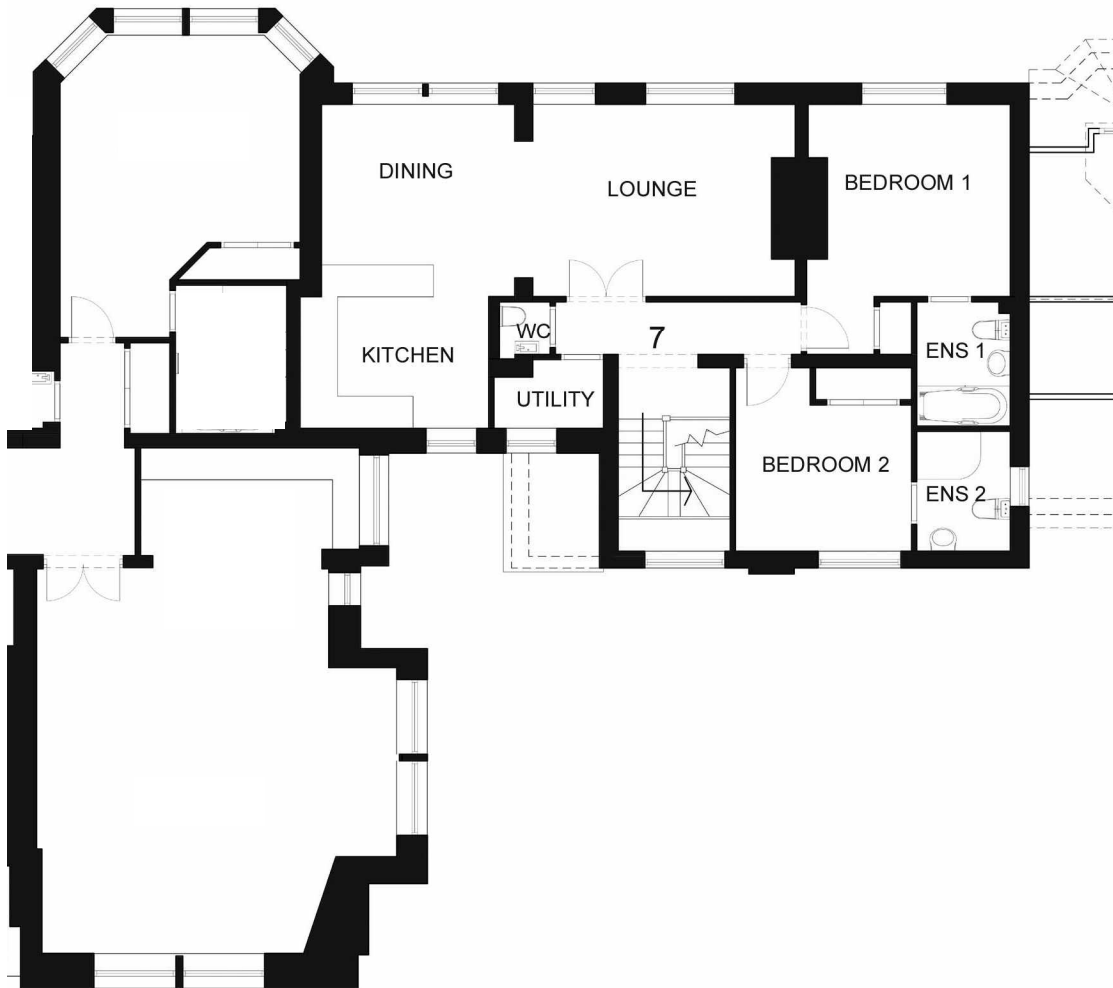
£ 1,150

## manor Apartment

2 bedrooms & 2 en-suites

# the Manor

the Manor



## Explore property 7...

Property 7 comprises of 1270 sq ft and embraces:

- lounge
- kitchen / diner
- wc
- utility
- master bedroom one
- bedroom two
- en-suite one
- en-suite two
- private secure car parking

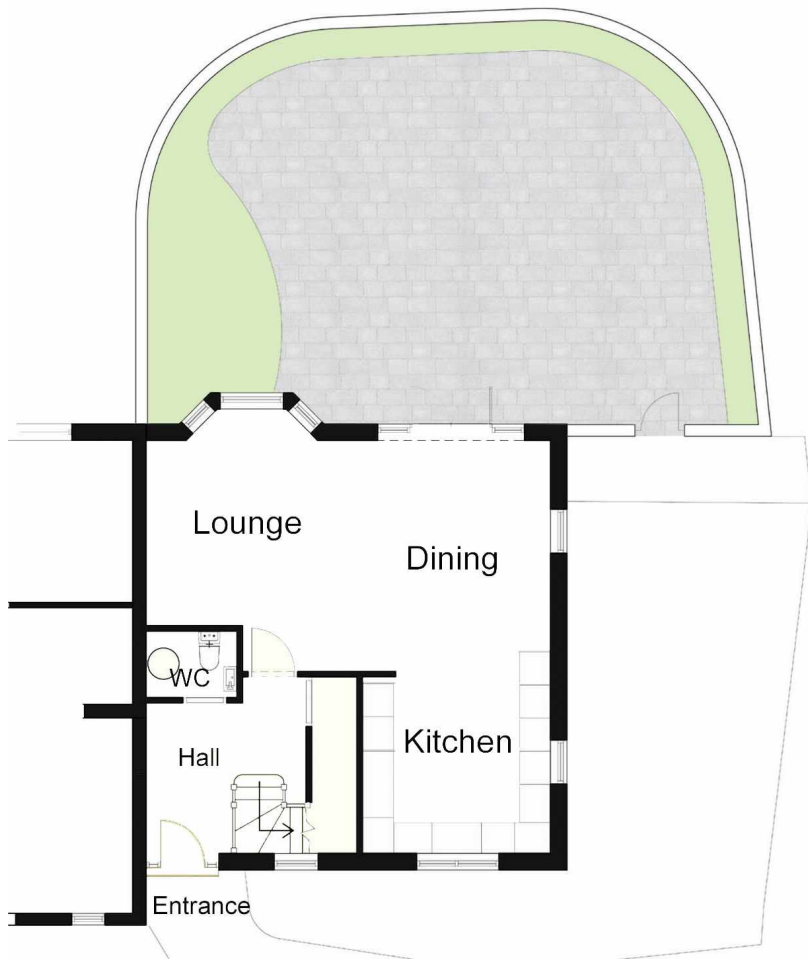
£ 1,150

## manor Apartment

2 bedrooms & 2 en-suites

# the Manor

the Manor



## Explore property 8...

Property 8 comprises of 1965 sq ft and embraces:

- lounge
- kitchen / diner
- wc
- master bedroom one
- bedroom two
- en-suite one
- master bathroom
- private garden
- private secure car parking

£ 1,150

## manor Apartment

2 bedrooms & private garden

# the Cedars

the Cedars



MEZZANINE FLOOR PLAN



Explore property  
9, 11 & 14...

Property 9, comprises of 1883.sq ft  
Property 11 comprises of 1548 sq ft  
Property 14 comprises of 1627 sq ft  
All three duplex townhouses embrace:

- lounge
- kitchen / diner
- wc
- utility
- master bedroom one
- bedroom two
- en-suite one
- en-suite two
- private terrace
- private secure car parking

Property 9 - £ 1,650  
Property 11 - £ 1,400  
Property 14 - £ 1,250

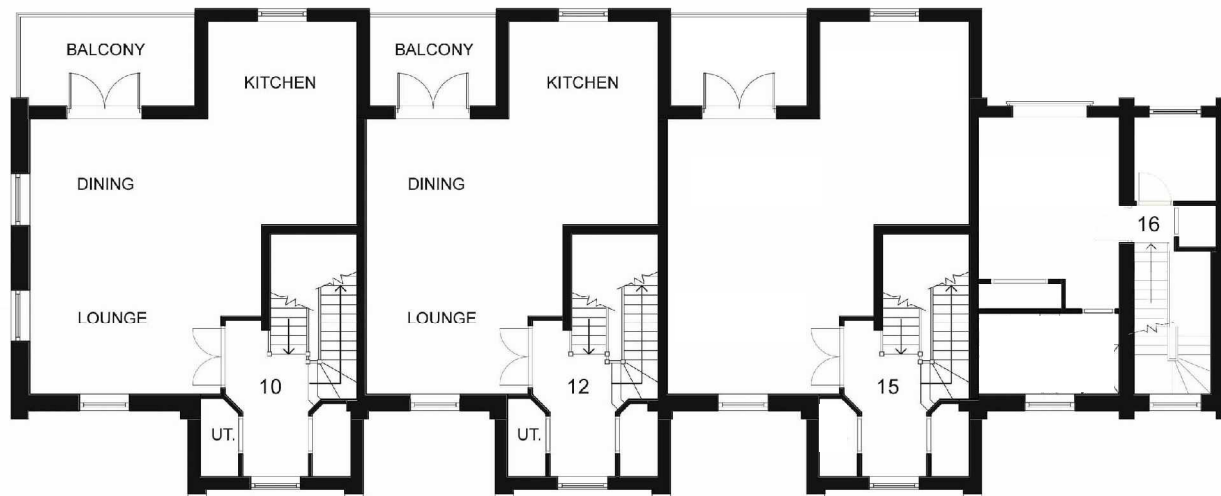
duplex Townhouse  
2 bedrooms & terrace

# the Cedars

the Cedars



SECOND FLOOR PLAN



Explore property  
10 & 12...

Property 10 & 12 comprise of 1363 sq ft ,  
with both duplex townhouses embracing:

- lounge
- kitchen / diner
- wc
- utility
- master bedroom one
- bedroom two
- master bathroom
- private balcony
- private secure car parking

Property 10 - £ 1,275

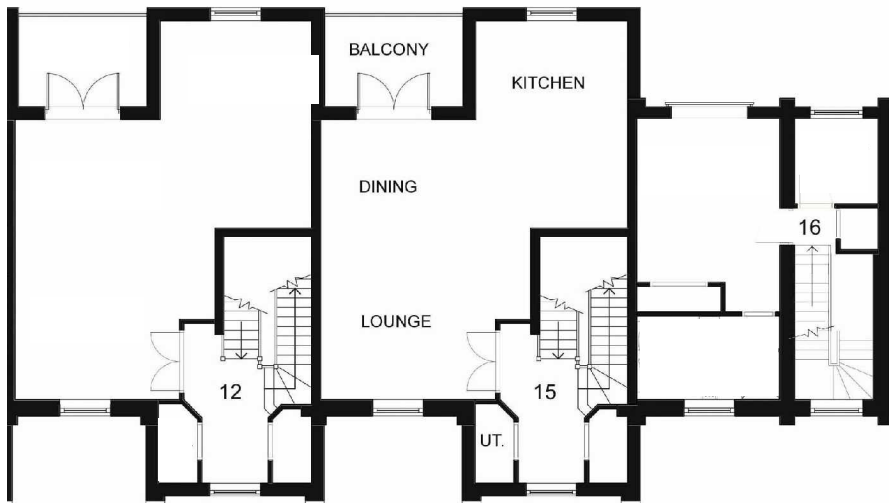
Property 12 - £ 1,175

duplex Townhouse  
2 bedrooms & balcony



# the Cedars

the Cedars



## Explore property 15...

Property 15 comprises of 1363 sq ft, and embraces:

- lounge
- kitchen / diner
- wc
- utility
- master bedroom one
- bedroom two
- en-suite one
- en-suite two
- study
- private balcony
- private secure car parking

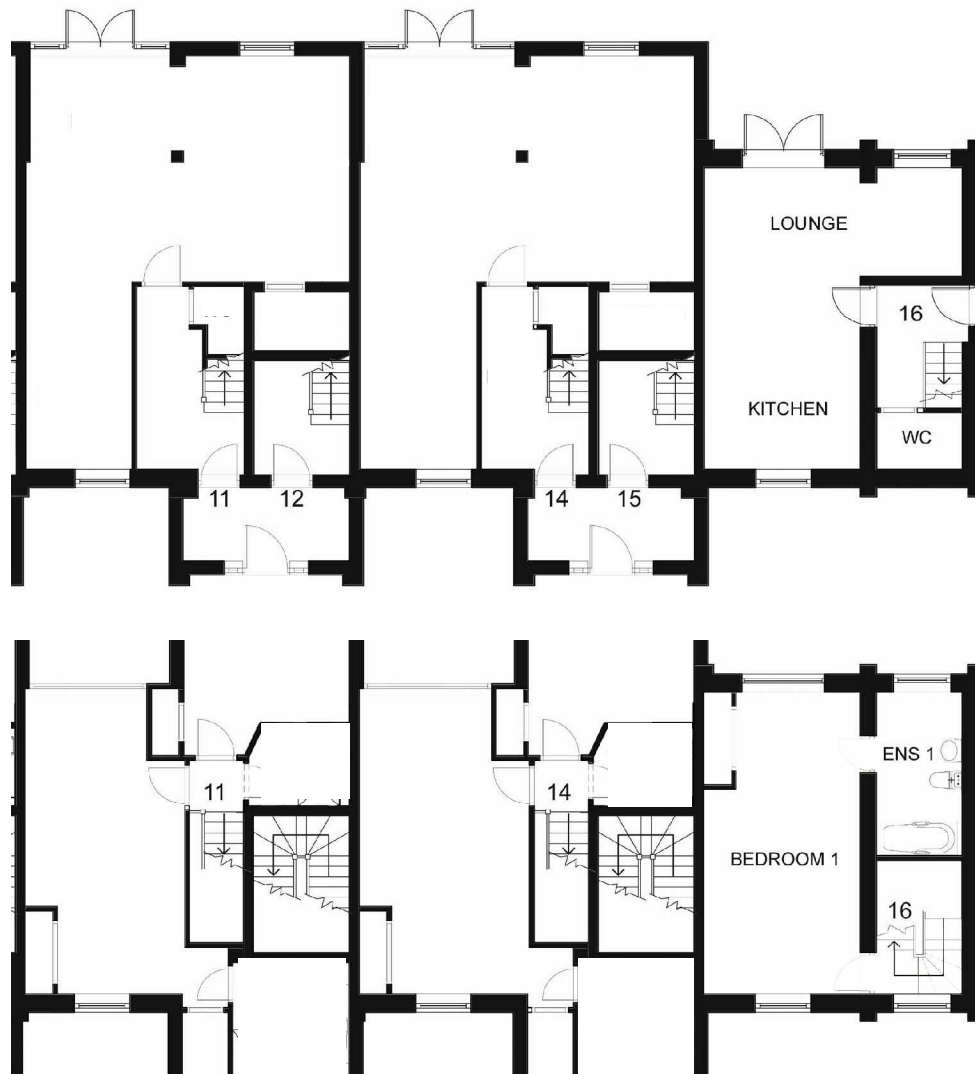
£ 1,295

## duplex Townhouse

2 bedrooms & balcony

# the Cedars

the Cedars



## Explore property 16...

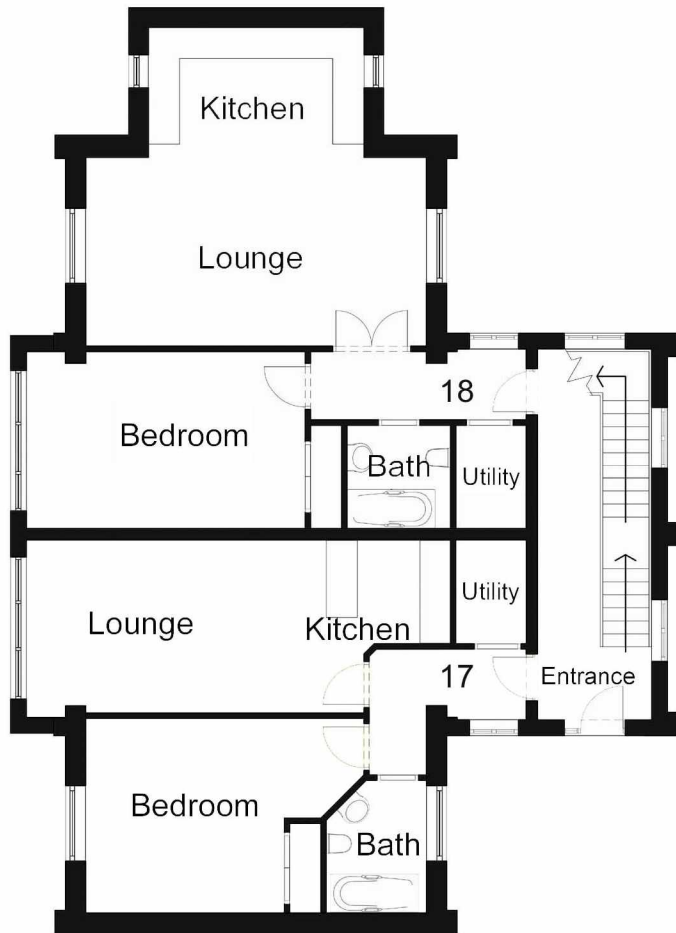
Property 16 comprises of 1607 sq ft, and embraces:

- lounge
- kitchen / diner
- wc
- master bedroom one
- en-suite
- private secure car parking

£ 1,150

## duplex Townhouse

1 bedroom with en-suite



## Explore property 17 & 18...

Property 17 comprises of 620 sq ft  
Property 18 comprises of 731 sq ft, with both apartments embracing:

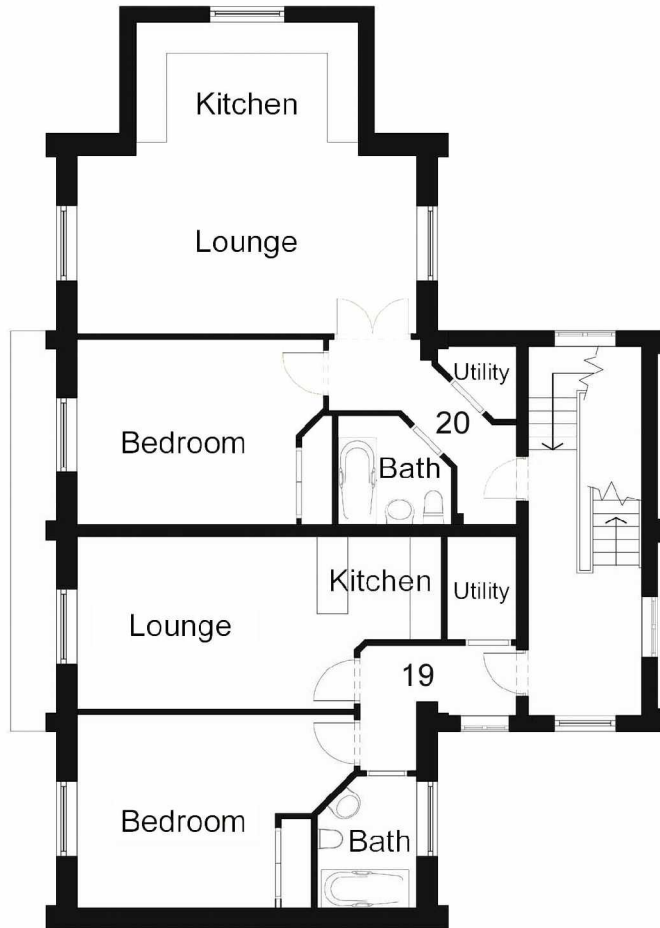
- lounge
- kitchen / diner
- wc
- utility
- master bedroom
- master bathroom
- private secure car parking

Property 17 - £ 750

Property 18 - £ 1,000

## ground floor Apartment

1 bedroom & master bathroom



## Explore property 19 & 20...

Property 19 comprises of 586 sq ft  
Property 20 comprises of 699 sq ft, with both apartments embracing:

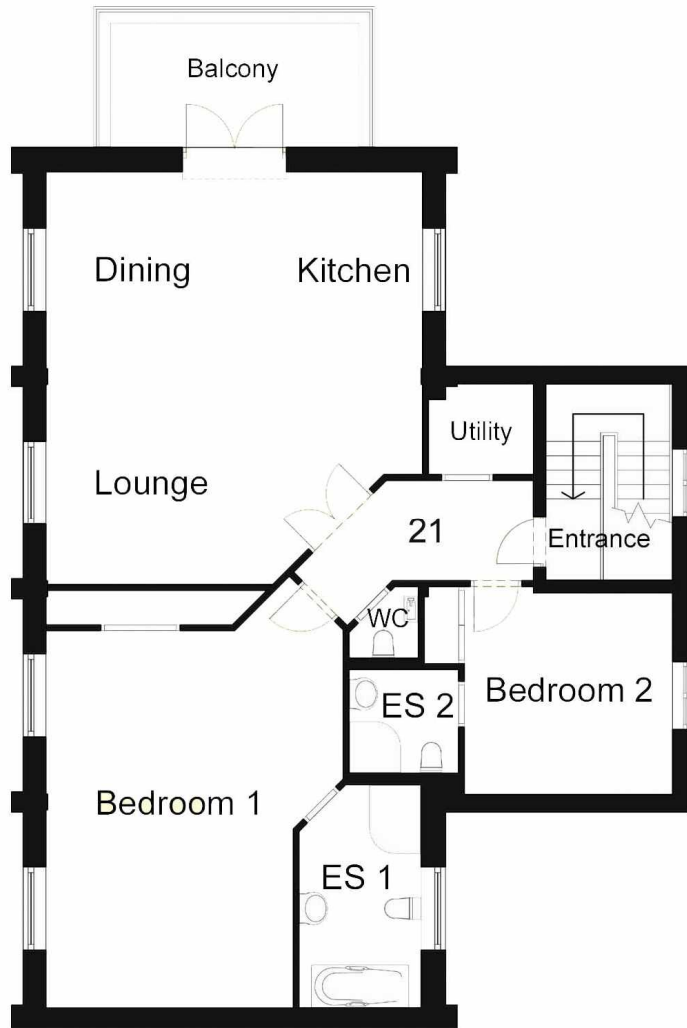
- lounge
- kitchen / diner
- wc
- utility
- master bedroom one
- master bathroom
- private secure car parking

Property 19 - £ 675

Property 20 - £ 895

## 1st floor Apartment

1 bedroom & master bathroom



## Explore property 21...

Property 21 comprises of 1496 sq ft, and embraces:

- lounge
- kitchen / diner
- wc
- utility
- master bedroom one
- bedroom two
- en-suite one
- en-suite two
- private balcony
- private secure car parking

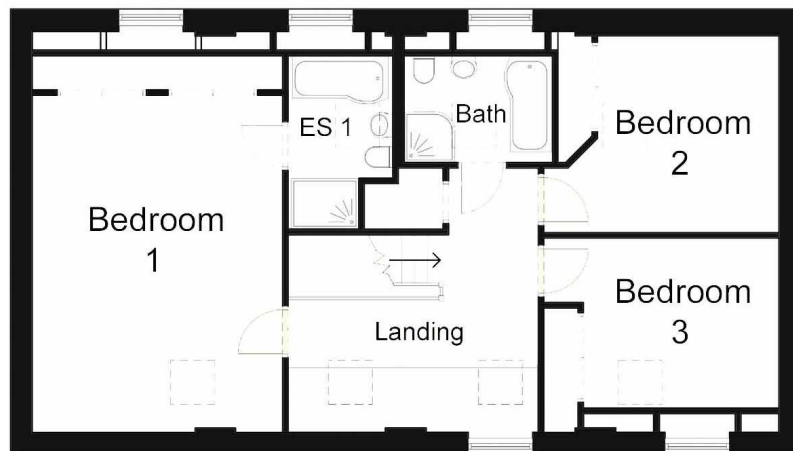
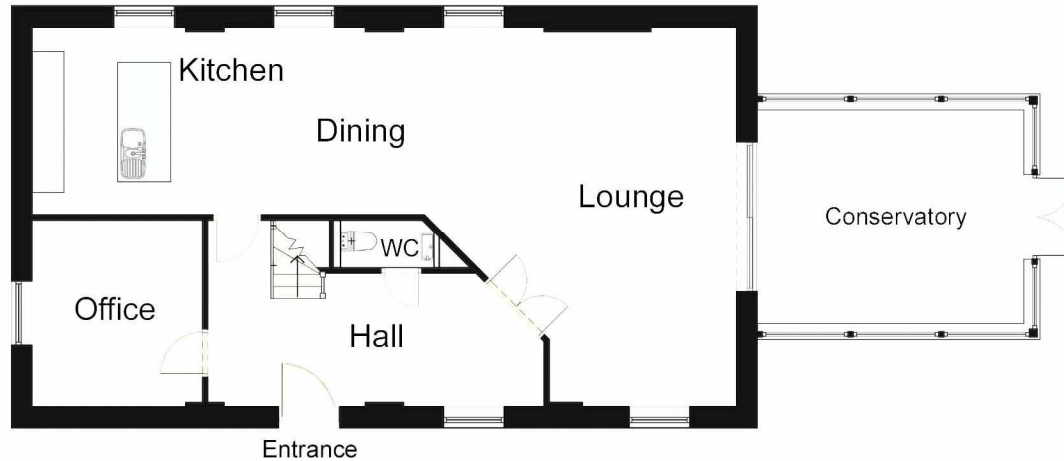
£ 1,225

## 2nd floor Apartment

2 bedrooms & private balcony

# the Lodge

the Lodge



## Explore property 22...

Property 22 comprises of 9208 sq ft, and embraces:

- lounge
- kitchen / diner
- wc
- utility
- master bedroom one
- bedroom two
- bedroom three
- en-suite one
- master bathroom
- study
- conservatory
- private garden
- double garage

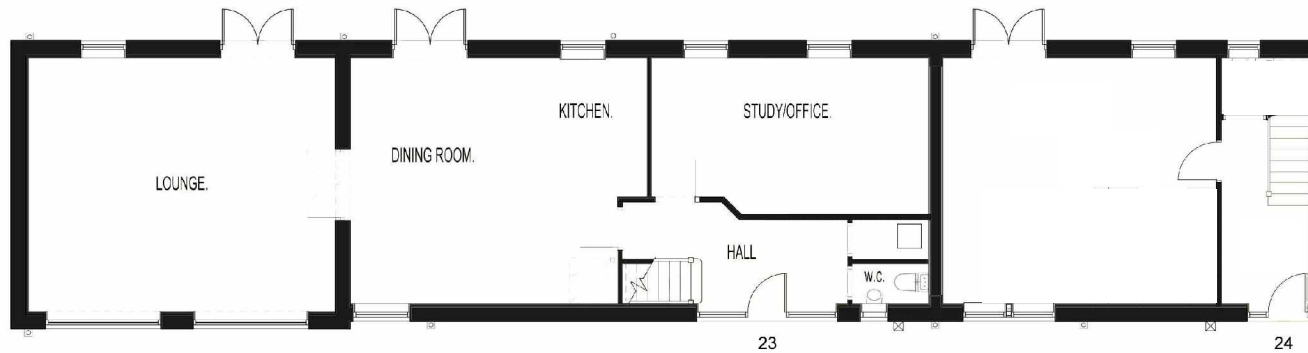
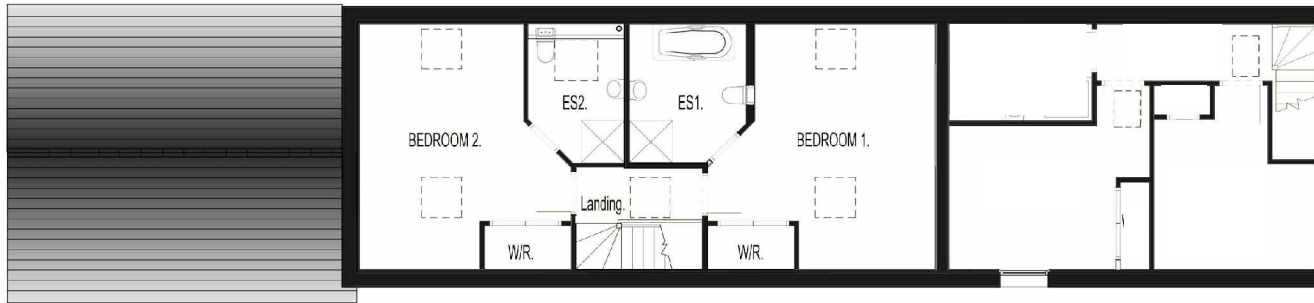
£ 1,900

## detached House

3 bedrooms & private garden

# the Stables

the Stables



## Explore property 23...

Property 23 comprises of 4848 sq ft, and embraces:

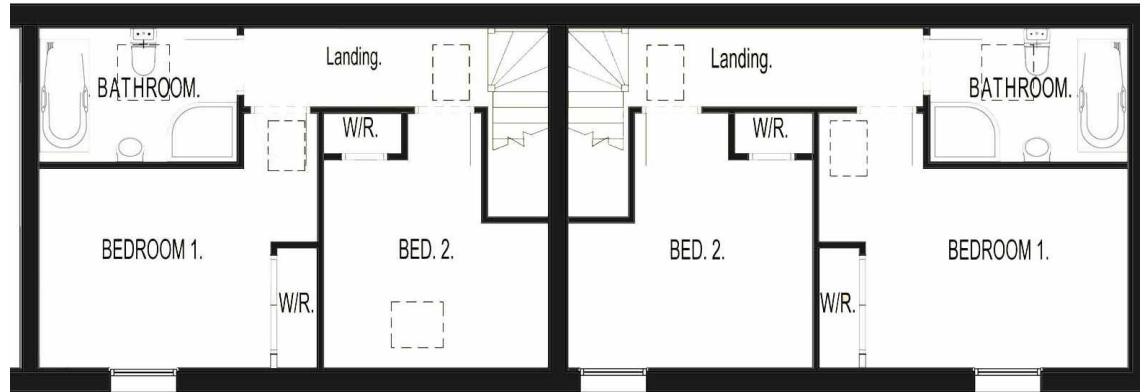
- lounge
- kitchen / diner
- wc
- master bedroom one
- bedroom two
- en-suite one
- en-suite two
- study
- private garden
- private driveway

£ 1,450

duplex House  
2 bedrooms & private garden

# the Stables

the Stables

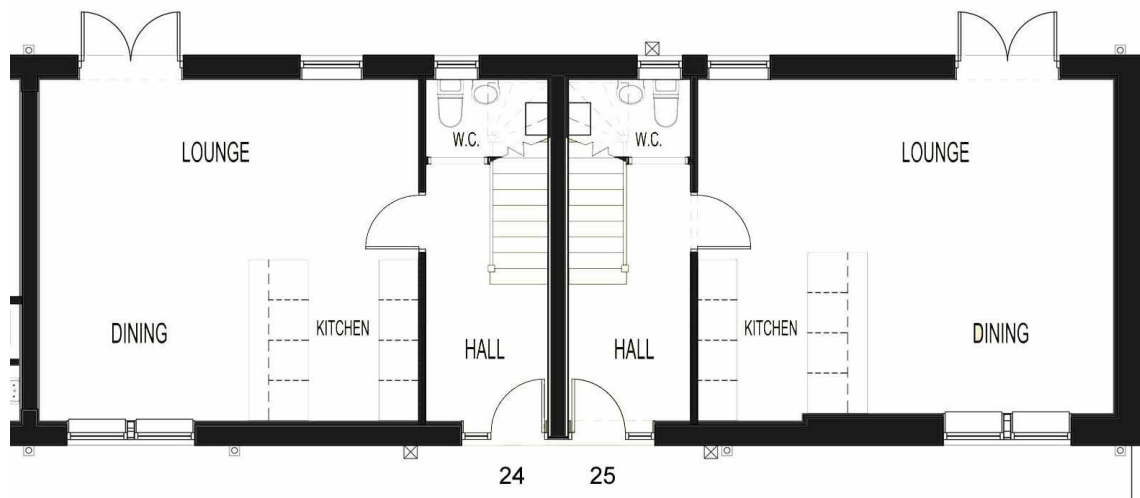


Explore property 24 & 25...

Property 24 comprises of 1898 sq ft,  
Property 25 comprises of 2686 sq ft, with both duplex  
houses embracing:

- lounge
- kitchen / diner
- wc
- master bedroom one
- bedroom two
- master bathroom
- private garden
- private driveway

Property 24 - £ 950  
Property 25 - £ 1,025

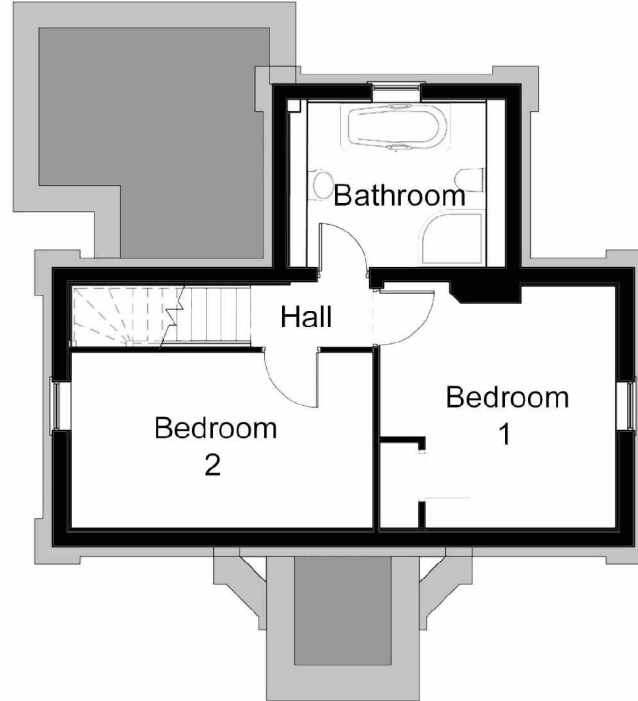
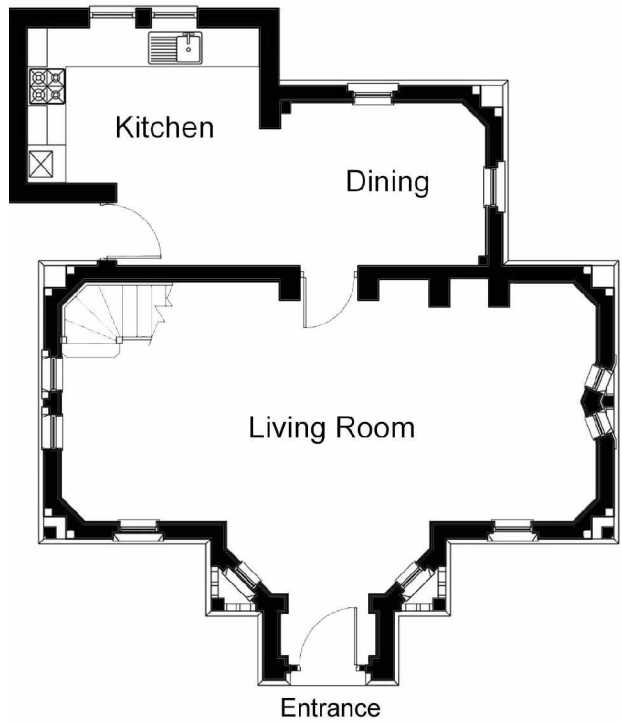


duplex House  
2 bedrooms & private garden



# the Gate House

the Gate House



## Explore property 26...

Property 26 comprises of 4695 sq ft, and embraces:

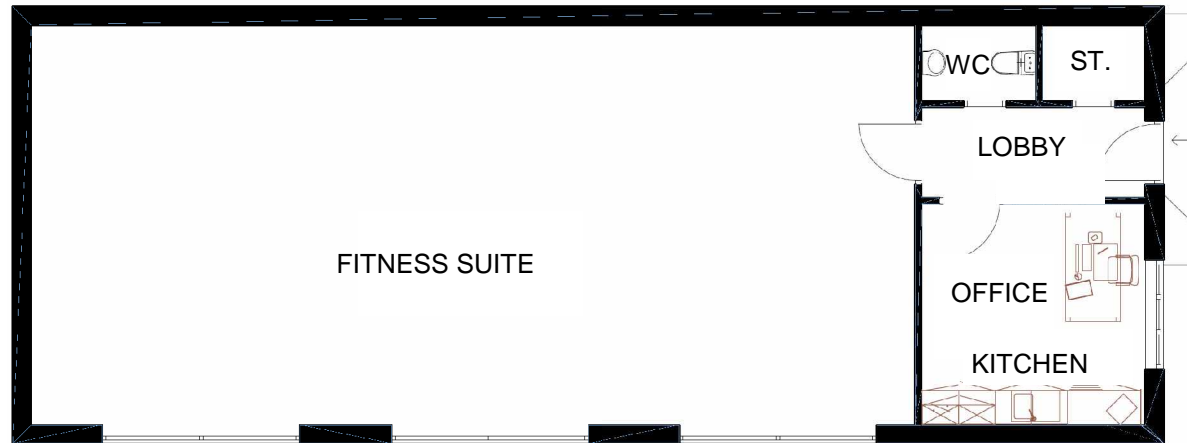
- lounge
- kitchen / diner
- wc
- master bedroom one
- bedroom two
- master bathroom
- private garden
- private driveway

£ 1,000

duplex House  
2 bedrooms & private garden

# the Fitness Suite

the Fitness Suite



## Explore the Fitness Suite ...

The fitness suite comprises of 1305 sq ft, and embraces:

- tread mill machines
- pro cross training machines
- rowing machines
- upright programmable bikes
- hybrid programmable bikes
- stepper machine
- multi weight machines
- yoga equipment



## State of the Art

Gymnasium & Tennis Court

# Brooklea Meadows

quality, style, exclusivity



# contact Us

Contact Us

For further information please contact us on the number below, or visit our website for further details.

We look forward to speaking to you soon.



Ashbury Homes Ltd  
t: 0151 494 1644  
f: 0151 494 1684  
e: [contact@ashburyhomes.co.uk](mailto:contact@ashburyhomes.co.uk)